

# Inspire 7-inch LCD Console

PM CN 07DN-XXXXX-XX, 07 DT-XXXXX-XX

## PARTS MANUAL



# Table of Contents

---

Serial Number Table	2
Console PCBs and Cables	3
PCB and Cable Locator	3
PCBs (ALL)	4
MIB & LIFE PULSE MIB Board Numbers	5
Cables (ALL)	6
Bezels	7
Tape	8
Display Components	9
Option Panel and Other Hardware	10



# Serial Number Table

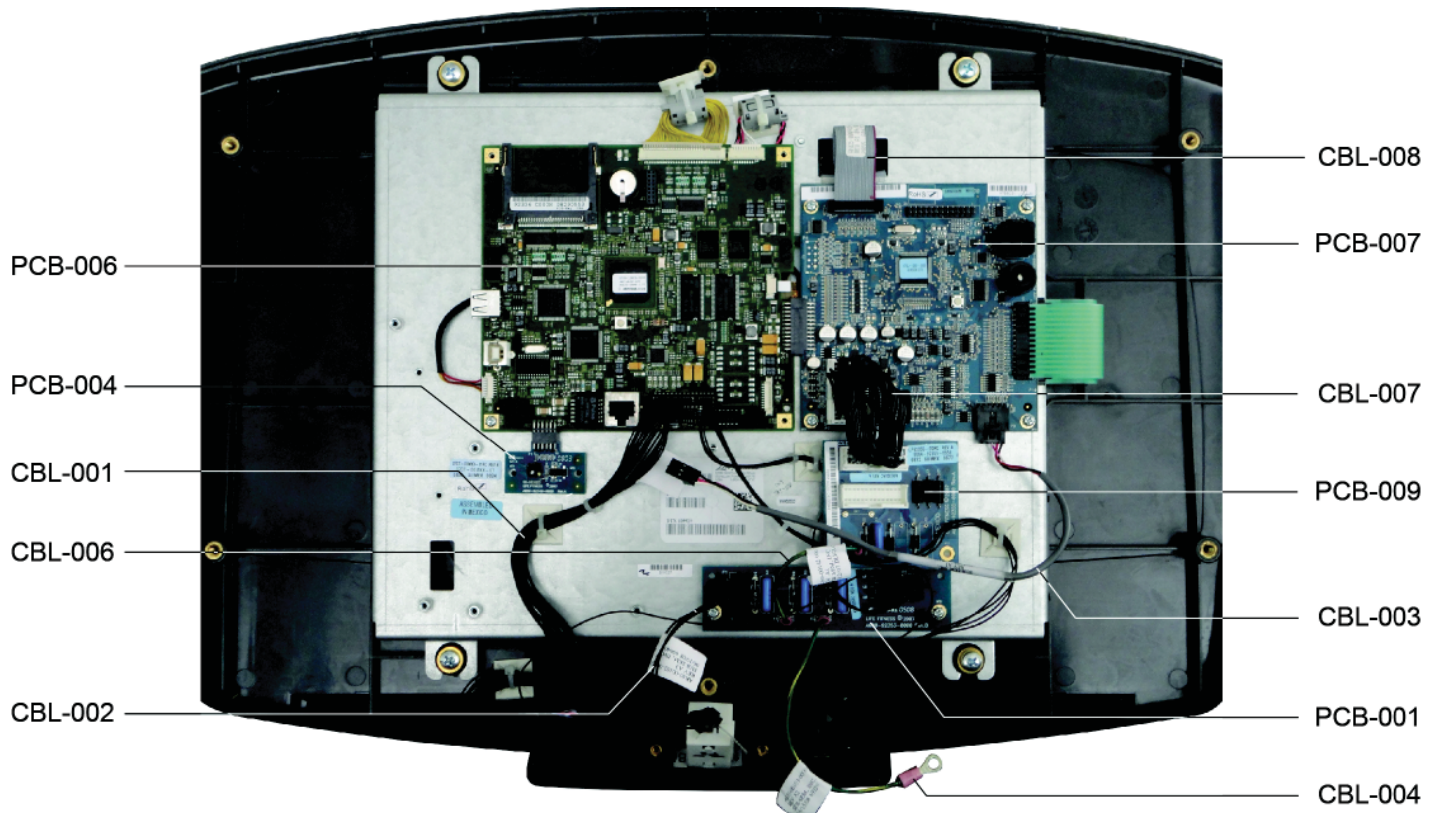
---

Console Number	Alpha Code	Starting Serial Number
07DT-DOMXX-01	DTX	100000
07DT-DOMXX-01	DTX	300000
07DT-INTXX-01	ITX	100000
07DT-INTXX-01	ITX	300000
07DN-ALLXX-01	ANX	100000
07DN-ALLXX-01	ANX	300000
07DN-ALLXX-02	ANX	121582 *
07DN-ALLXX-02	ANX	314819 *

\* May not be consecutive

# Console PCBs and Cables

## PCBs and Cable Locator



**TREADMILL CONSOLE**



**NON-TREADMILL CONSOLE**

# PCBs (All)



**PCB-001**



**PCB-002**



**PCB-003**



**PCB-004**



**PCB-005**



**PCB-006**



**PCB-007**



**PCB-008**



**PCB-009**

## Parts List

Item	Alpha Code	Part Number	Description
PCB-001	DTX, ITX, ANX	<a href="#">B084-92353-0000</a>	PCB-ASSY: APOLLO; ESD PCB
PCB-002	DTX, ITX, ANX	<a href="#">B084-92331-0000</a>	PCB ASSY: APOLLO 7-SEG DATA DISPLAY TM ONLY
PCB-003	Used with Pre LED backlight LCD (AK70-00036-0000).	<a href="#">AK32-00193-0000</a> (comes with cable)	INVERTER W/CBL ASSY: PURCH
PCB-004	DTX, ITX, ANX	<a href="#">B084-92349-0002</a>	PCB ASSY: APOLLO AUTHENTICATION COPROCESSOR IPOD
PCB-005	DTX, ITX, ANX	<a href="#">118E-00001-0244</a>	HEART RATE RECEIVER: CODED; RE07L (Also need TP-002)
PCB-006	DTX, ITX, ANX	<a href="#">A084-92336-0001</a>	PROGRAMMED PCB: B084-92336-0001 SINGLE BOARD COMPUTER (SBC)
PCB-007	DTX, ITX, ANX	<i>See Page 5 for correct part number</i>	PROG DSP PCB ASSY: APOLLO MACHINE INTERFACE BOARD (MIB)
PCB-008			
PCB-009	DTX, ITX	<a href="#">B084-92355-0002</a>	LIFEPULSE ESD BOARD HR ESD TREAD

# MIB & LIFEPULSE PCB BOARD NUMBERS

Serial Numbers Beginning with 100000					
Item Number	Alpha Code	Starting Serial Number	Ending Serial Number	PCB7 A084-92334-0000 *	PCB8 A084-92334-0004
07DT-DOMXX-01	DTX	DTX100001	DTX121985	X	
07DT-DOMXX-01	DTX	DTX121986			X
07DN-ALLXX-01	ANX	ANX100001	ANX121985	X	
07DN-ALLXX-01	ANX	ANX121986			X
07DT-INTXX-01	ITX	ITX100001	ITX105131	X	
07DT-INTXX-01	ITX	ITX105132			X
07DN-ALLXX-02	ANX	ALL			X

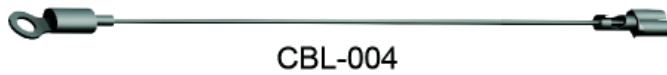
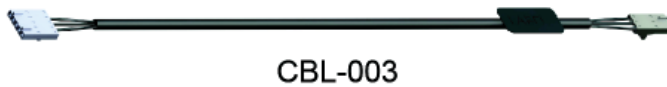
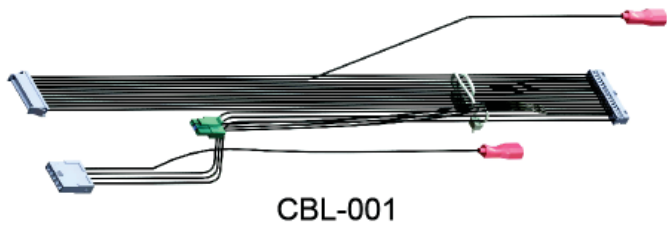
Serial Numbers Beginning with 300000					
Item Number	Alpha Code	Starting Serial Number	Ending Serial Number	PCB7 A084-92334-0000 *	PCB8 A084-92334-0004
07DT-ALLXX-01	DTX	DTX300001	DTX307380	X	
07DT-ALLXX-01	DTX	DTX307381			X
07DN-ALLXX-01	ANX	ANX300001	ANX318510	X	
07DN-ALLXX-01	ANX	ANX318511			X
07DT-INTXX-01	ITX	ITX300001	ITX30266	X	
07DT-INTXX-01	ITX	ITX302667			X

\* If console does NOT have PCB-009 Order the following:

- PCB-009 B084-92355-0002 QUANTITY 1
- TAPE, TP-001 OK70-01069-0000 QUANTITY 1
- CABLE CBL006 AK69-00142-0000 QUANTITY 1
- CABLE CBL-007 AK70-00063-0000 QUANTITY 1

For Installation Instructions see  
**SERVICE BULLETIN EC110524.**

# CABLES (All)



## Parts List

Item	Alpha Code	Part Number	Description
CBL-001	DTX, ITX, ANX	<a href="#">AK65-00041-0000</a>	Cable Assy: SBC - User Option Panel
CBL-002	DTX, ITX, ANX	<a href="#">AK65-00102-0001</a>	Cable Assy: Headphone Ext
CBL-003	DTX, ITX	<a href="#">AK70-00037-0000</a>	Cable Assy: Uncoded Polar
CBL-004	DTX, ITX	<a href="#">AK65-00103-0000</a>	Cable Assy: Ground ESD
CBL-005	ANX	<a href="#">AK69-00119-0000</a>	Cable Assy: Coded Polar PCB to MIB
CBL-006	ANX	<a href="#">AK69-00142-0000</a>	Cable Assy: Ground LP ESD
CBL-007	ANX	<a href="#">AK70-00063-0000</a>	Cable Assy: Console: ESD
CBL-008	DTX, ITX, ANX	<a href="#">AK65-00045-0000</a>	Cable Assy: Data Display - MIB



# BEZELS (All)



BZ-001



BZ-002



BZ-003



SC-001



BZ-004



BZ-005

## Parts List

Item	Alpha Code	Part Number	Description
BZ-001	ITX	AK70-00021-0000	Assy: Front Bezel "I" Tread World
BZ-002	DTX	AK70-00021-0001	Assy: Front Bezel "I" Tread Domestic
BZ-003	DTX, ITX	AK70-00014-0000	Bezel Back Assy - Tread
BZ-004	ANX (01)	AK70-00022-0001	Assy: Front Bezel "I" Non-Tread Universal <b>(See Note)</b>
	ANX (02)	AK70-00022-2401	Assy: Front Bezel "I" Non-Tread CHGR
BZ-005	ANX (01)	AK70-00023-0000	Bezel Back Assy - Non-Tread
	ANX (02)	AK70-00073-2400	Bezel Back Assy - Non-Tread Universal, Purch, CHGR
SC-001	ANX, DTX, ITX	0017-00101-1972	Bezel Back Mounting Screws (6)

**Note:** Comes with 118E-00001-0244 (PCB-005) and 0K39-01044-0000 (TP-002)

# TAPE

---

## Parts List

Item	Alpha Code	Part Number	Description
TP-001	ANX	OK70-01069-0000	Tape, Foam, Double-sided, Mount HR ESD Board
TP-002	ANX	OK39-01044-0000	Tape, Adhesive B (to secure the in-console heart rate receiver)

# DISPLAY COMPONENTS

---



**DC-002**

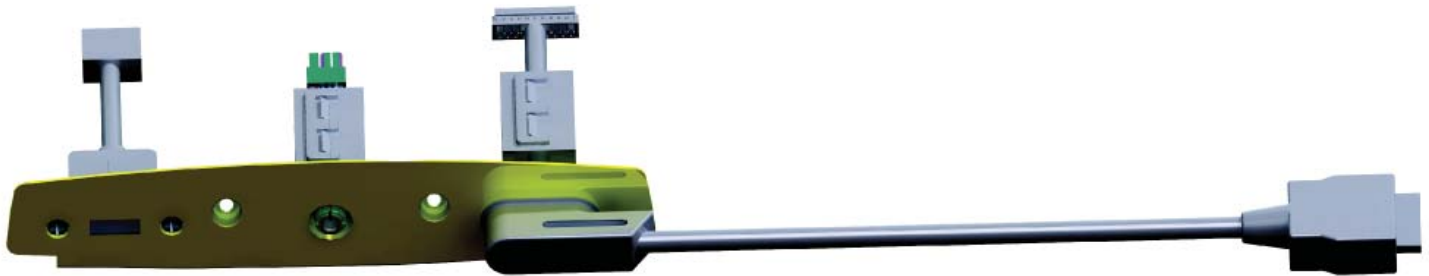
## Parts List

See **Service Bulletin EC131018** for instructions and quantities to order when replacing the LCD panel.

Item	Alpha Code	Part Number	Description
DC-001	DTX, ITX, ANX	GK70-00002-0015	7-inch LCD Upgrade Kit
DC-002	DTX, ITX, ANX	AK70-00104-0000	CF Card with Inspire OS Upgrade



# OPTION PANEL & HARDWARE



OP-001



OP-003



OP-004



OP-005

## Parts List

Item	Alpha Code	Part Number	Description
OP-001	DTX, ITX, ANX (01)	AK70-00101-0200	Option Panel Complete ( <b>See Note</b> )
	DTX, ITX, ANX (02)	AK70-00101-2400	
OP-003	ANX, ITX	121E-00001-0025	Clamp Filter: Ferrite Core w/case; Z-CAT series
OP-004	DTX, ITX, ANX	AK65-00040-0000	USB Cable Assembly
OP-005	DTX, ITX, ANX	0017-00101-1970	Option Panel Mounting Screw (2)

**Note:** When replacing the Option Panel, transfer ferrites from the old Option Panel to the new Option Panel.